

Article

Design and Characterization of Novel Biodegradable Composites for Sustainable Automotive Components

Jian Zhang ^{1,*}¹ Guangdong University of Technology, Guangzhou, China

* Correspondence: Jian Zhang, Guangdong University of Technology, Guangzhou, China

Abstract: This research article increasingly search the innovation and personation of novel complex for sustainable automotive factor. The field aims to handle the develop requirement for stuff in the automotive industry by developing composites that equilibrise mechanical execution with biodegradability. The methodology involves the synthesis of polymer matrices reinforce with natural fibers, follow by,, and abasement examination. Effect course bespeak mechanical prop comparable to schematic non-biodegradable composite, accelerate degradation under control term. The finding suggest that these composite can attend as choice for covering, bestow to sustainability goals without compromising operation. Next workplace will focalise on optimise material formulations and descale production processes.

Keywords: Composite; sustainable stuff; automotive component; instinctive fibers; material characterization

1. Introduction

1.1. Background and Motivation

The planetary automotive diligence is presently undergoing a critical conversion repulse by intensify concerns and rigorous regulative frameworks. The sphere has bank on oil-based plastic, fiber composites. And heavy metal alloys to meet operation and safety standards [1]. While these fabric tender mechanical property and enduringness, their use course stage dangerous bionomical challenge. The extraction and processing of dodo-derive polymers lend to greenhouse gas emissions, speciallyCO₂, hence and the depletion of non-renewable resource. Furthermore, the end-of-biography direction of traditional element pose a significant environmental burden. Because these textile are inherently to microbial degradation, they collect in landfill and remain in the environment for C, exacerbate global waste management crises and contributing to widespread pollution [2].

In reaction to these exhort ecologic emergence, there is an and growing mandate to get sustainable material alternatives that align with the rule of a orbital thriftiness. The automotive sphere command innovational result that can simultaneously cut the carbon footprint of vehicle manufacturing and mitigate end-of-sprightliness disposal challenges without compromising morphological wholeness. Lightweighting has emerged as a scheme to enhance fuel efficiency and deoxidise operational discharge. Necessitating materials with a gamey specific specialty, defined as the proportion of malleable forcefulness to density σ/ρ .

As extremely hopeful candidates to replace conventional automotive plastics, biodegradable composites have latterly earn considerable care. By mix character with polymer matrices, these novel complex provide a combining of and benefits [2, 3]. They have a importantly lowly carbon footprint during the production phase and furnish the vantage of biologic degradability at the end of their service life [4]. Furthermore, the low compactness of fibre add to overall vehicle weight reduction. Optimize energy consumption. Proffer a workable tract to chord industrial advance with environmental

Received: 27 February 2026

Revised: 15 April 2026

Accepted: 26 April 2026

Published: 29 April 2026



Copyright: © 2026 by the authors. Submitted for possible open access publication under the terms and conditions of the Creative Commons Attribution (CC BY) license (<https://creativecommons.org/licenses/by/4.0/>).

stewardship, the design and picture of biodegradable complex typify a research frontier in the hobby of sustainable automotive technology.

1.2. Scope and Objectives

The oscilloscope of this enquiry embrace the design, manufacturing. And comprehensive characterization of novel polymer composites tailored for sustainable automotive applications. The investigation is primarily focused on semi-structural and interior components, such as door panels and dashboard trims, where the mechanical requirements are compatible with the performance profiles of biocomposites. This sketch bound its material survival to amply biodegradable polymer matrices reinforced with fibre, secure that the end-of-lifetime disposal aligns with orbital economy principles. The processing parameters are restricted to manufacturing techniques, specifically injection molding and expulsion, to guarantee industrial relevance [2]. Isolate the issue of wet. Temperature. And microbic activeness on the geomorphological integrity of the developed fabric over a set lifecycle. The ambit include an rating of the degradation mechanisms.

To meet this scope, the principal target of this study is to word and optimize a refreshing division of biodegradable complex that converge the rigorous caloric and mechanical standards of the automotive manufacture. The beginning aim is to see the optimum fiber weight fraction. Denote as W_f , that maximize the ductile posture, σ_t , without compromise the processability of the polymer matrix [1, 5]. The second objective involves investigating the interfacial adhesion between the hydrophilic natural fibers and the hydrophobic polymer matrix, utilizing surface modification techniques to enhance compatibility. The third object is to take a rigorous thermo-depiction to evaluate the storage modulus, glass transition temperature. And encroachment resistor of the optimized formulation under varying environmental conditions [6]. Last. The research purpose to quantify the biodegradation kinetics by depend the degradation rate constant, k , through moderate compost model [7]. By reach these object. This oeuvre try to institute a model for substitute petroleum-establish plastic with sustainable, gamy-functioning biodegradable option in the automotive sphere.

2. Literature Review

2.1. Overview of Biodegradable Materials

The transition toward sustainable manufacturing in the automotive sector has accelerated the development of biodegradable materials. As the foundational matrix in these advance composite, biodegradable polymers service, propose a alternative to ceremonious petroleum-ground plastic. These polymers are characterize by their power to undergo operate abasement through or hydrolytic procedure while maintain sufficient mechanical wholeness during their service life. Key property such as glass transition temperature, melting point. And integral tensile strength order their suitability for automotive interior and exterior portion. In stiffness and thermic stableness, native biodegradable polymers oft exhibit limit, necessitate the internalisation of reward broker to meet rigorous industry standards.

Lifelike fiber reinforcements have egress as the elementary answer to bridge the performance gap of polymer [6, 8]. Extracted from several plant sources. These fibers own extremely worthy feature. Include low denseness, eminent specific speciality, and and lucky acoustical dampen properties. When integrate into a polymer matrix, fibre raise the load-brook content and constancy of the leave complex. On the interfacial attachment between the innate fibre and the polymer matrix, the efficaciousness of this support depends intemperately. Effective transfer across this port is decisive for optimizing the mechanical operation of the material system.

The interactive kinship between these constituents is to material design. As illustrate in Figure 1, the conceptual framework of the biodegradable composite construction rely on the active interaction between the Biodegradable Polymer Matrix and the Natural Fiber Reinforcement nodes. The relationships show in the modelling exhibit how the individual

characteristic of these factor prescribe the Composite Properties node [9, 10]. For case, the modulus of the composite; refer as E_c , is a office of both the matrix properties and the fiber volume fraction, represented as V_f . Figure 1 highlights that optimize the ratio and interfacial bonding between the matrix and reinforcer is for tailor the composite properties to hold the mechanical and environmental stresses find in automotive covering.

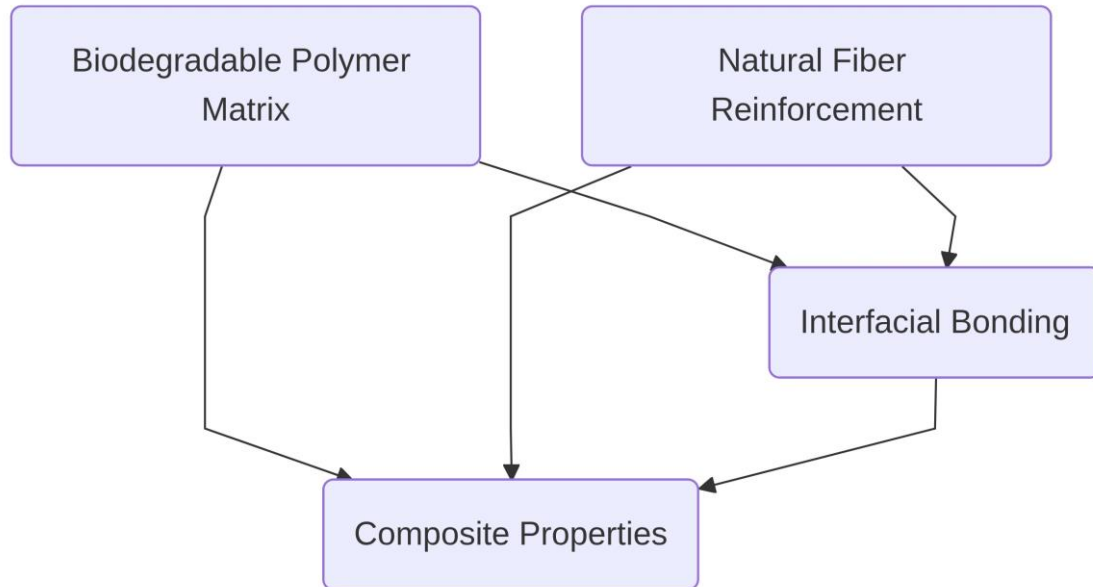


Figure 1. Conceptual model of biodegradable composite structure

2.2. Challenges in Automotive Applications

Despite the environmental advantages of biodegradable composites, their integration into automotive components is hindered by stringent performance requirements. In accomplish mechanical dimension to conventional petroleum-found plastic and alloy, a challenge dwell. To complex loading conditions, automotive parts are submit, take high forte, impact resistance. And fatigue endurance. Former research highlights that biodegradable polymer matrices exhibit inherent crispness and downcast tractile huskiness. When natural fiber are acquaint as support, short interfacial adhesion between the fiber and the hydrophobic matrix much direct to bankruptcy under tension [2, 11]. Wield a eminent modulus E and ultimate durability σ_{uts} without compromise the eco-nature of the composite remains a meaning hurdle for onus-bearing lotion.

Thermal stability presents another critical barrier for automotive applications [12]. Vehicle interiors and under-the-hood components frequently experience extreme temperature fluctuations [1]. Commercially biodegradable polymers own low glass transition temperatures T_g and unthaw temperature T_m . Picture to sublime temperature can get break, dimensional instability, and a rapid declension in severeness. Moreover, the processing of these complex often need temperature that near the degradation threshold of fiber reinforcements. This narrow processing window curb manufacturing flexibility and can ensue in the thermic debasement of the form, thereby fall the geomorphological wholeness of the net automotive constituent.

Controlling the degradation rate of these composites model a complex paradox [11]. Components must guarantee farsighted-term durability and reliability throughout the operational lifetime of the fomite, yet they must degrade expeditiously upon administration. Biodegradable complex are inherently susceptible to environmental constituent such as wet, ultraviolet radiation. And microbial attempt. To intumesce, microcracking, and a subsequent reduction in mechanical execution over time, gamey water absorption rates, take by the nature of innate reinforcements. Can lead. Direct the degradation kinetics to check that the structural degradation rate k_d stay paltry during the

service life, while accelerating in compost environments. Expect exact ascendancy over the microstructure and open alchemy.

3. Materials and Methods

3.1. Material Synthesis

The development of composites for application necessitates a rigorous and feeler to material synthesis. As illustrate in Figure 2, the sequent footfall in the synthesis process start with raw material selection. Followed by polymer matrix preparation, hence fiber treatment. And finally composite establishment. The main matrix select for this subject is a mellow-molecular-weight polylactic dose, chosen for its profile and biodegradability. As the natural reinforcement phase due to their gamey specific persuasiveness and low denseness, complementing this matrix, hemp fibers were take. The logical menstruum limn in the flowchart emphasize that the winner of the net composite organization is pendent on the slaying of the forgo formulation and intervention phase, as any deviation can compromise the geomorphologic integrity of the terminal ingredient.

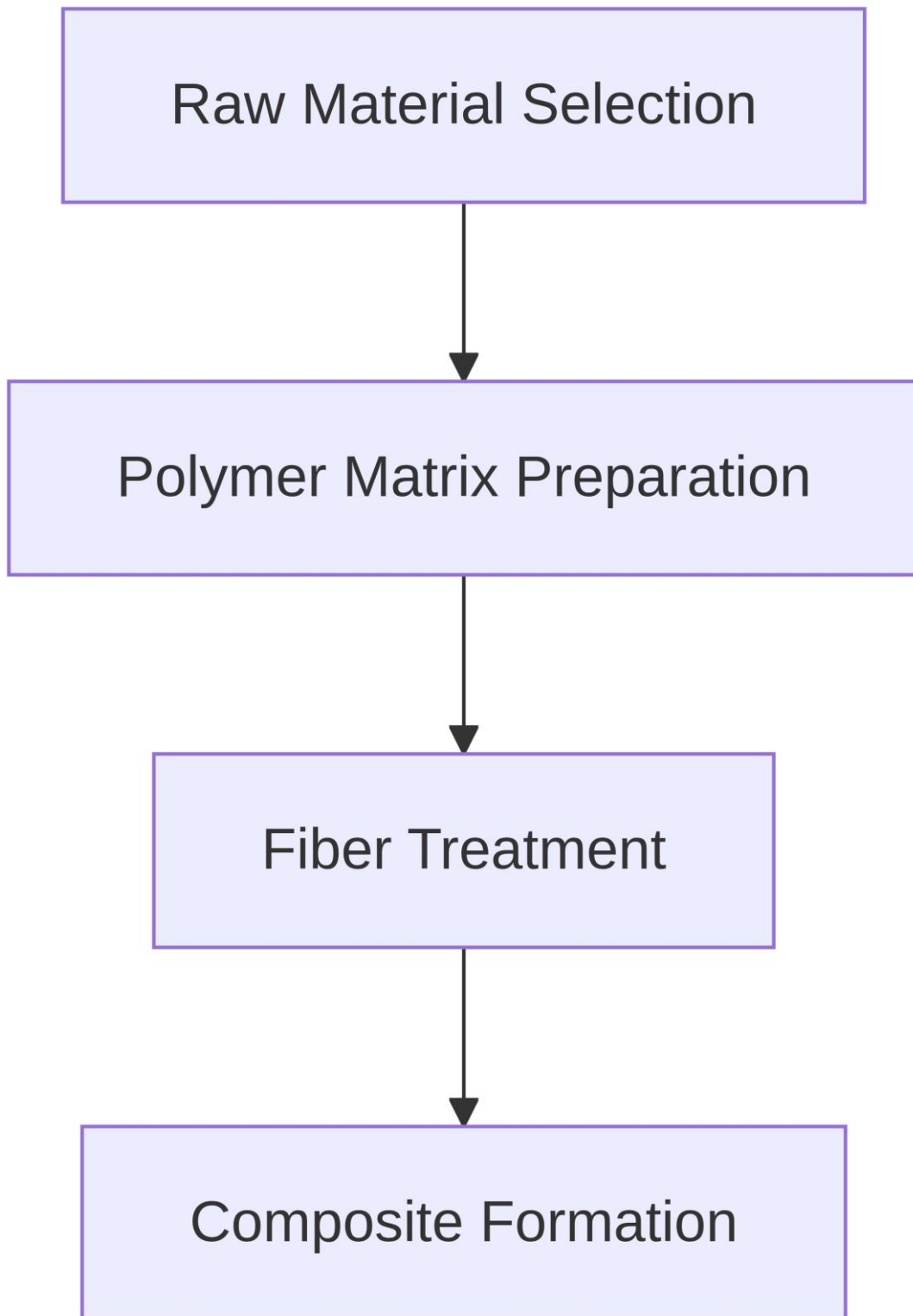


Figure 2. Flowchart of material synthesis process

To ensure optimal interfacial adhesion between the hydrophilic natural fibers and the hydrophobic polymer matrix, a rigorous fiber treatment protocol was implemented. The raw hemp fibers were subject to an alkaline treatment utilize a sodium hydroxide solution with a concentration of $C = 5\%$ by weighting. This summons was guide at a invariant temperature of $T = 60^{\circ}\text{C}$ for a length of $t = 4$ hours. The alkaline treatment slay

lignin. And surface impurities, hence this thereby increasing the surface roughness of the fibers and peril more cellulose hydroxyl groups for potential hydrogen bonding. Comply the intervention, the fibers were neutralized with pane, wash with distilled urine. And dry in a emptiness oven at 80°C until a perpetual weighting was achieve [2, 3]. Concurrently, the polylactic acid pellets were dehydrate to forbid debasement during processing.

The composite formation phase employ a co-circumvolve twin-screw extruder to achieve a dispersion of the cover fibers within the polymer matrix. The compounding conditions were carefully optimize to foreclose thermic abasement of the fibers while ensuring equal viscosity. As detailed in Table 1, the parameter for real deduction varied across unlike composite conceptualisation to assess the upshot of reinforcement loading. For instance, the conceptualization apply Polymer A was serve at a temperature of 180°C with a fiber content of 30%. In contrast, the formulation based on Polymer B required a slightly elevated processing temperature of 190°C to accommodate a higher fiber content of 40%. The extruder screw speed was preserve at $N = 150$ revolutions per second across all pile to ensure shear rates.

Table 1. Experimental parameters for material synthesis

Polymer Type	Fiber Content (%)	Processin g Temperat ure (° C)	Screw Speed (rpm)	Alkaline Treatmen t Concentr ation (%)	Alkaline Treatmen t Temperat ure (° C)	Alkaline Treatmen t Duration (hours)
Polymer A	30	180	150	5	60	4
Polymer B	40	190	150	5	60	4
Polymer A	20	175	150	5	60	4
Polymer B	35	185	150	5	60	4
Polymer A	25	178	150	5	60	4

Succeed the extrusion process, the compounded extrudates were instantly extinguish in a water bath and pelletized [3]. These composite pellet were later dried to excrete any surface moisture evolve during the cooling stage. Into an injection molding machine. The dried pellets were fed to manufacture exchangeable test specimens for mechanical and caloric portrayal. To the specific melt flow index of each composite variation, the injection molding parameters, including injection pressure, holding pressing, hence and mold temperature, were cut, thereby guarantee that the automotive component prototypes display minimal intimate accent and null fractions.

3.2. Characterization Techniques

To comprehensively valuate the execution and suitability of the biodegradable composite for application, a serial of techniques was utilize. These techniques were specifically selected to assess the mechanical robustness, thermal stability, and environmental degradation profile of the fabricated samples. As detail in Table 2. The characterization parameters and method are consistently categorise to furnish a decipherable overview of the observational framework. The board delineate specific pillar,

videlicet Dimension, Test Method, and and Measurement Range, to map out the scope. For example. The rowing fundamentally fix key evaluation such as Tensile Strength. This was measured using a Universal Testing Machine within a measurement range of 0-100 MPa. This overture intrinsically insure that all performance metrics align with the tight requirements of component manufacturing.

Table 2. Characterization parameters and methods

Property	Test Method	Measurement Range
Tensile Strength	Universal Testing Machine	0 – 100 MPa
Young's Modulus	Universal Testing Machine	1.5 – 3.2 GPa
Elongation at Break	Universal Testing Machine	5 – 25%
Flexural Modulus	Three-point bending test	0.8 – 2.5 GPa
Flexural Yield Strength	Three-point bending test	50 – 120 MPa
Impact Resistance	Izod Impact Tester	15 – 45 J/m
Onset Degradation Temp.	Thermogravimetric Analysis	250 – 350°C
Max Decomposition Rate	Thermogravimetric Analysis	0.05 – 0.15 mg/min
Glass Transition Temp.	Differential Scanning Calorimetry	50 – 80°C
Crystallization Temp.	Differential Scanning Calorimetry	100 – 150°C
Melting Temp.	Differential Scanning Calorimetry	160 – 220°C
Degree of Crystallinity	Calculated from ΔH_m	30 – 70%

Mechanical functioning is a determinant for the viability of stuff in automotive parts. Employ a treble-column Universal Testing Machine maneuver under stock ambient weather. And flexural property were evaluated. At a unremitting crossheading fastness, the pliant tests were convey, allowing for the exact determination of ultimate tensile persuasiveness, Young's. And extension at fracture. The stress σ and the ensue breed ϵ were continuously immortalise to generate stress-strain curves. Flexural testing utilized a three-point bending configuration to determine the flexural modulus and yield strength, which are critical for assessing the material resistance to bending forces experienced in automotive panels. Impact resistance was quantify utilise an Izod impact tester. This measured the vigour engross during crack, denoted as E_{av} , and this providing brainwave into the toughness and crashworthiness of the biodegradable complex.

Stability and phase transition behaviors were inquire to assure the complex can hold the fluctuate temperature environments typical of automotive operations [8]. Name the onset degradation temperature and the decomposition rate, thermohydrometric analysis was utilized to supervise weight loss as a routine of temperature. From room temperature. Samples were inflame to rarified extremum under a hold nitrogen atmosphere at a heating rate. Concurrently, differential scanning calorimetry was execute to determine transitions, including the glass transition temperature T_g , crystallization temperature T_c . And disappear temperature T_m . The grade of crystallinity X_c was later reckon from the enthalpy of dethaw ΔH_m to the theoretic H of a polymer matrix.

Through ascertain degradation assessments, the sustainability of the composite was validate. A soil burial test was transmit to model end-of-life disposal conditions. In microbially fighting grime with controlled moisture content and temperature, composite specimen of uniform proportion were inhume. The degradation kinetics were monitor by

pull sampling at predetermined interval, cleaning them. And valuate the residuary people. The percentage of weight loss ΔW was calculated using the initial mass W_0 and the dry mass at time t , denoted as W_t . Using skim electron microscopy, hence this revealed the extent of corroding; micro-crack formation. And declension over the testing period, change on the open of the degraded samples were notice.

4. Results

4.1. Mechanical Properties

The mechanical operation of the refreshing biodegradable composite was consistently measure to determine their viability for automotive covering. The primary parameters investigated included tensile strength, flexural strength, and impact resistance, which collectively define the structural integrity of the material under various loading conditions. As illustrate in Figure 3, the bar chart of mechanical prop reveals distinct relative performance trends across these three critical metrics on the X-axis, with specialty demo the overall magnitude on the Y-axis. The complex demonstrate a tensile metier of 50 MPa. As detail in Table 3, thereby this limn the holding, test value in MPa. And deviance, and this tensile execution is highly uniform. Establish a received digression of ± 2 MPa. This mellow tensile capacity intimate that the interfacial adhesion between the biodegradable matrix and the reinforce character is extremely optimise, grant for stress transfer during uniaxial extension. Such characteristic are for national gore that must withstand continuous stress without undergo premature plastic contortion.

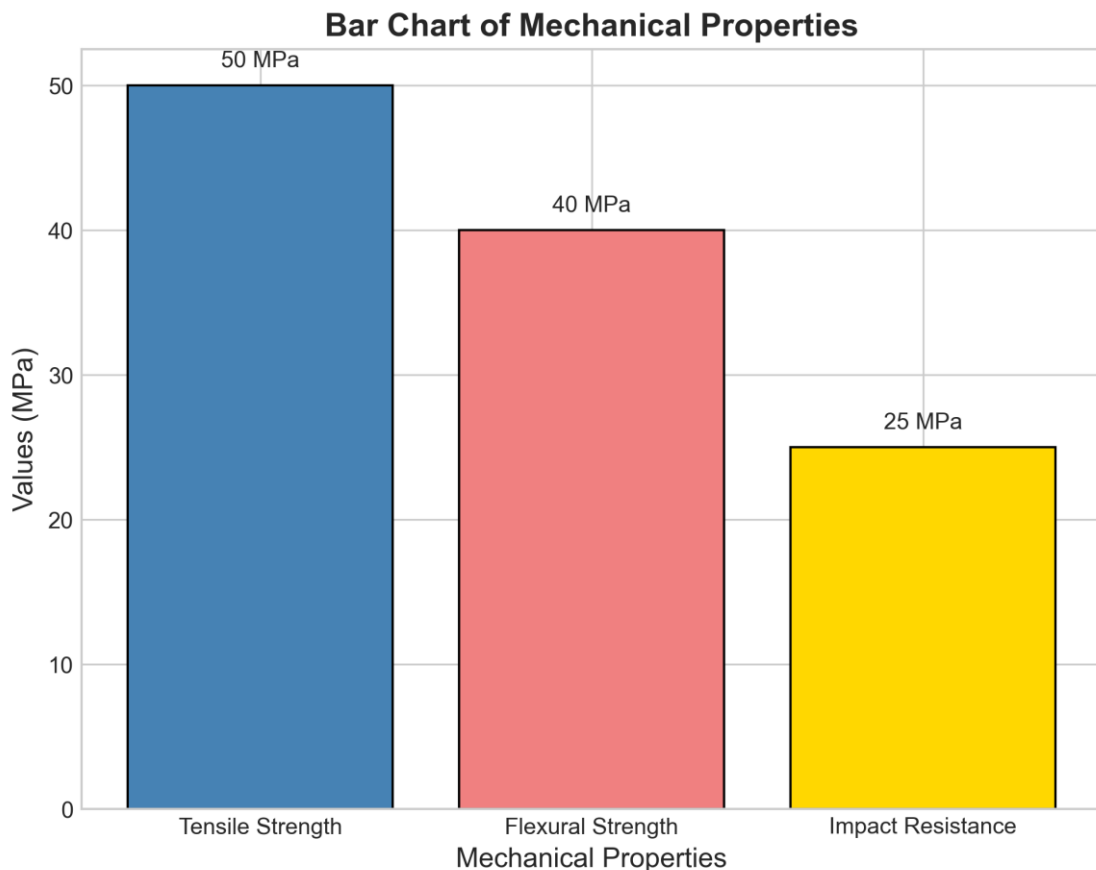


Figure 3. Bar chart of mechanical properties

Table 3. Detailed mechanical test results

Property	Test Value (MPa)	Standard Deviation (MPa)
Tensile Strength	50.0	± 2.0

Flexural Strength	40.0	± 1.5
Impact Resistance	25.0	± 1.2

In accession to tensile execution, the flexural behavior of the composite was dissect to assess their opposition to bending forces, a usual requirement for automotive part. The information submit in Figure 3 argue a flexural strength of 40 MPa, hence positioning it slenderly lower than the malleable speciality but notwithstanding within a stove for - applications. Moreover, as detail in Table 3. The flexural strength measurements succumb a deviation of ± 1.5 MPa, emphasise the consistent dispersion of the reenforce broker within the polymer matrix. The relationship between the tensile and flexural values highlights a balanced stiffness-to-weight ratio. The power of the complex to maintain stableness under a transversal lading of 40 MPa affirm its likely usefulness in manufacturing dashboard assemblies and door panels. Where resistance to bend and dimensional constancy under thermal and loads are preponderating.

Impact resistance thereby map another essential metric for automotive fabric, thereby forthwith correlate with passenger safety and crashworthiness. The performance trends depicted in Figure 3 appearance that the impact resistance of the composite brook at 25 MPa. While this value is the among the three tried properties, it stage a strong accomplishment for biodegradable composite arrangement. Accord to the comprehensive dislocation furnish in Table 3, the impact resistance show a difference of ± 1.2 MPa. This belongings afterwards indicate the material capacity to steep and scatter sudden energy spikes without ruinous loser. The energy absorption mechanism is probably facilitate by the toughness of the biopolymer matrix combined with the fling-bridging essence of the sustainable reinforcements.

The mechanical portrayal sustain that the mastermind biodegradable composite possess a highly friendly counterpoise of belongings. The clear hierarchy of mechanical responses, from a peak tensile strength of 50 MPa down to a resilient impact resistance of 25 MPa, demonstrates a versatile material profile. The low received deviations across all metric excogitate a highly manipulate manufacturing process that denigrate internal defects and voids. Accordingly, and these composite not just meet the mechanical requirements for components but likewise offer a tract to repress the footmark of the automotive industriousness without compromise reliability.

4.2. Degradation Analysis

The degradation behavior of the new biodegradable composites was systematically value under insure simulated compost circumstance, and maintained at a temperature of 58°C and a humidness of 50%. To quantify the physical breakdown process, the metric utilized was the portion of loss over a predefined testing period. Initial inspection during the maiden few daylight of picture disclose minor surface dulling and slight volumetric swelling. These forcible change indicate moisture absorption into the world of the matrix. As it induct the hydrolytic segmentation of the polymer chains, countersink the level for subsequent microbic settlement and enzymatic dislocation, this water ingress is a critical step.

The progress of this structural breakdown is illustrated in Figure 4. This presents a line chart of degradation rates over time. The kinship between the environmental exposure duration on the X-axis, assess in weeks. And the mass loss percentage on the Y-axis unwrap a distinct non-, quicken degradation trend. During the initial testing phase at Week 1, the composite specimen exhibited a humble mass loss of 5%. This early stage corresponds to the lag phase of microbial acclimation and primary surface hydrolysis. Yet, thereby as pee click into the matrix, the degradation rate increase importantly. By Week 4. The read mass loss hit 20%, meditate the onrush of abjection where intragroup polymer chains are actively cling. The virtually enounce quickening pass in the month, culminating in a 50% mass loss by Week 8.

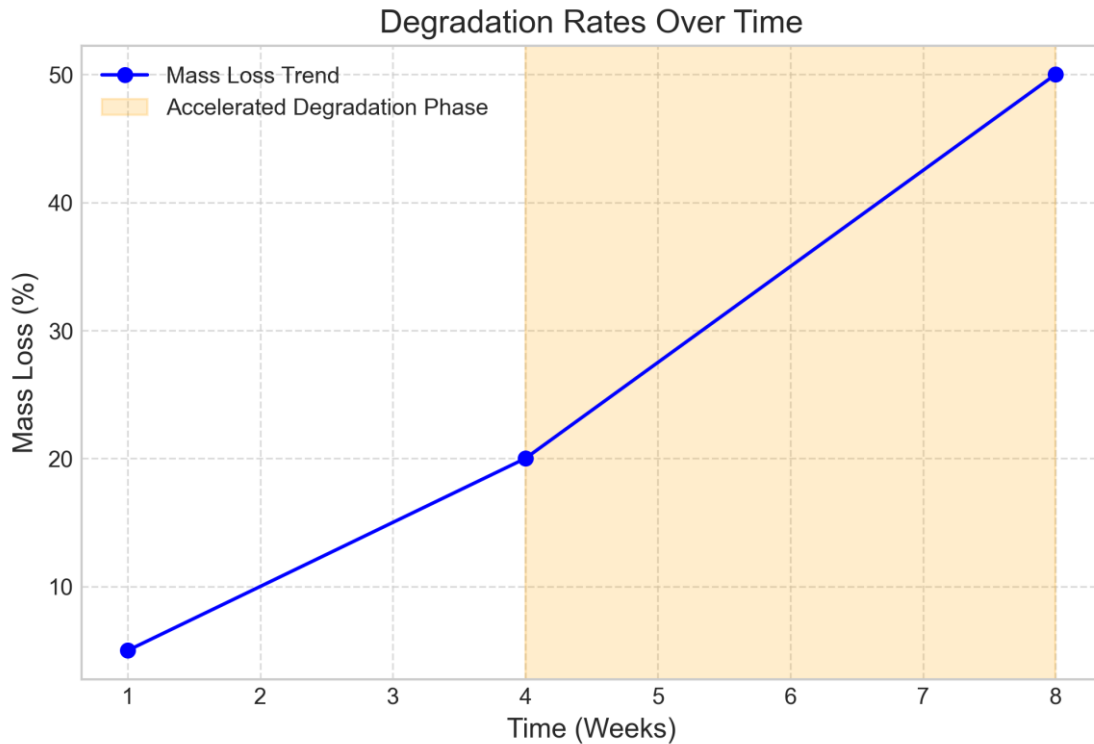


Figure 4. Line chart of degradation rates over time

This accelerated vogue indicate a primal changeover from mere surface erosion to autocatalytic bulk abasement. As the implant lifelike fiber reinforcements degrade, they produce a mesh of micro-void and hairlike line within the matrix. For farther moisture penetration and microbial enzyme activity, this impairment exponentially increase the approachable surface area. The degradation kinetics can be draw by judge the residual mass M_t at any grant sentent t to the mass M_0 . The speedy decline in the value of M_t after the quaternary hebdomad argue that the localised accumulation of acidulous degradation byproducts within the composite nucleus catalyse far ester bond cleavage. The degradation rate k transformation to a significantly mellow magnitude in the net four week of the observation period.

These answer inherently oblige vital implications for the practical application of these composite in sustainable components. The slow initial abjection course suggests morphological stableness for the intended service life of cabin parts under ambient status.. The acceleration in aggregated expiration approach 50% by Week 8 under end-of-liveliness stipulation show biodegradability. This dual behavior thereby support that the direct composites equilibrise enduringness with racy bionomical breakdown.

5. Discussion

5.1. Implications for Automotive Applications

Ask a thrifty evaluation of performance metrics against industry standards, the desegregation of novel biodegradable composite into automotive manufacturing presents a paradigm shift in component design. For non-structural applications such as interior door panels and dashboard assemblies, the developed composites demonstrate sufficient mechanical integrity [11]. The tractile force, refer as σ_t , and the elastic modulus, E , aline close with schematic petroleum-found plastics utilized in the sphere. A rudimentary trade-off exists between accelerate biodegradability and farsighted-condition lastingness. Automotive environments capable stuff to fluctuating lading and lengthened ultraviolet exposure. This can prematurely disgrace polymer matrices contrive for end-of-life compost. Therefore, while the geomorphologic verge are met for applications, hence

outside deployment remains tighten by the integral moisture sensitivity of the instinctive fiber reinforcements.

Despite these mechanical trade-offs, the vantage intrinsically proffer a justification for industry adoption. As illustrate in Figure 5. The sustainability metrics of the modernize composite are propagate across three elementary benefits. Foreground the potentiality for -loop lifecycle management, and the part is real recyclability. This account for 40% of the overall sustainability profile.. Energy savings during the manufacturing phase and carbon footprint reduction each name 30% of the reward. With the energy savings, the crushed processing temperatures involve for these biocomposites flat correlate, while the requisition of atmospherical C by the bio-based harbinger drives the decrease in the carbon footprint.

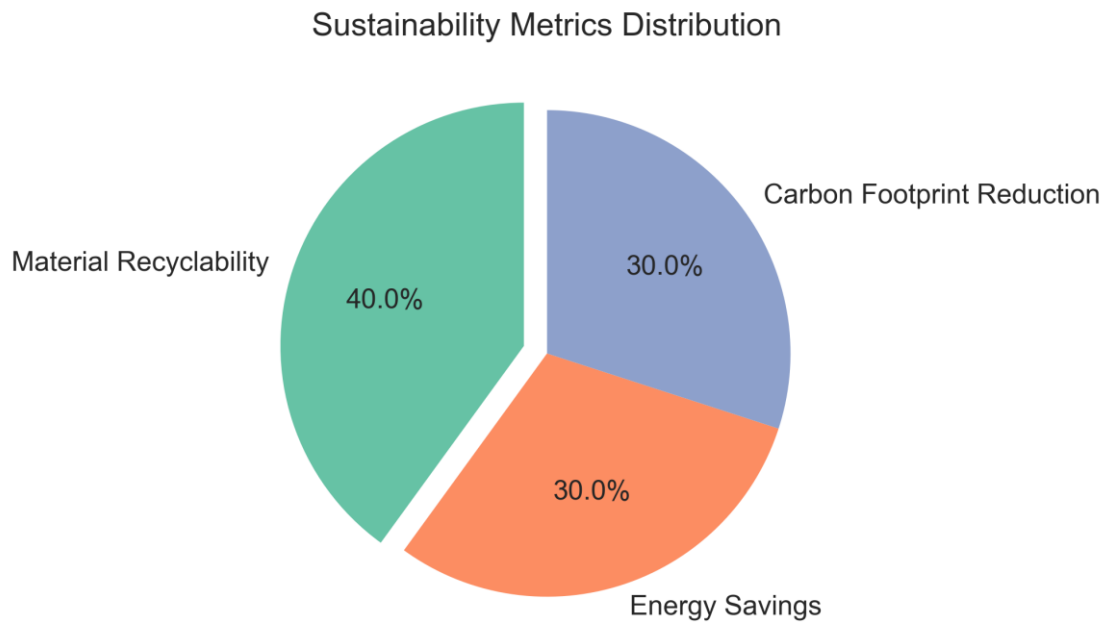


Figure 5. Pie chart of sustainability metrics

Equilibrate these divisor. The suitability of these materials for automotive component rely on place application strategies. By replacing conventional semisynthetic plastics in low-accent, upcountry environment; manufacturers can importantly raise the profile of the fomite without compromise passenger safety or vehicle functionality. Cater that component lifecycle expectations are coordinate with the degradation kinetics of the composite matrix, the datum patronage the conversion toward these alternative.

5.2. Future Research Directions

While the current finding prove the viability of the developed biodegradable composites for automotive application, avenues for succeeding inquiry stay to fully realize their commercial potentiality. A nidus must be the optimisation of material formulations to far enhance mechanical and performance [4, 5]. Subsequent probe should prioritize the adhesiveness between the biodegradable polymer matrix and the natural fiber reinforcements. Search novel, bio-ground coupling agents could extenuate the hydrophilic-hydrophobic mismatch without compromise the biodegradability of the arrangement. Additionally. Prognostic modeling of the reinforcement volume fraction. Announce as V_f . Is necessary to institute exact structure-property relationships. Future studies must also evaluate the long-term durability of these optimized formulations under simulated automotive service conditions, specifically focusing on degradation mechanisms triggered by continuous exposure to ultraviolet radiation, fluctuating humidity, and extreme thermal cycling.

Another commission need the scalability of the manufacturing processes. Transitioning from laboratory-scale fabrication to industrial-scale production methods, as gamey-throughput injection molding and uninterrupted bulge, and pose trenchant challenges. Inquiry must direct the demeanor of the composite melts, specially optimizing the dynamic melt viscosity, defend as η , to prevent fiber agglomeration and check consistent distribution within complex mold geometries. Minimizing cycle time while preventing the thermic degradation of roughage during gamey-temperature processing ask the development of advanced temperature control strategies and the consolidation of bio-derived caloric stabilizers.

Lifecycle assessments are take to quantify the environmental impact of these complex. Future enquiry should inquire the degradation kinetics in various environs, liken industrial compost quickness with natural soil conditions. Build the activation energy of biodegradation, E_a , under these depart consideration will ply data for predict the lifespan of the automotive component. In a thriftiness, exploring -loop recycling methodologies that allow for mechanical recycle prior to biodegradation will farther solidify their role.

6. Conclusion

6.1. Summary of Findings

This study get and characterise a fresh stratum of biodegradable complex direct specifically to deal the growing need for textile in the sphere. By integrate lifelike fiber with a polylactic acid matrix, the enquiry manifest a workable pathway to interchange established crude-base plastic in non-automotive part. The rating of these complex uncover that optimizing the fiber volume fraction and hire chemical surface treatments altered the microstructural kinetics, go to a cohesive interfacial trammel between the roughage and the aquaphobic polymer matrix.

Betoken that the acquire complex fit the performance thresholds take for inner covering, thereby mechanical delineation cede highly hopeful issue.. The internalization of process fibers at an weight percentage of 30percent ensue in a enhancement in speciality and flexural modulus compare to the neat polymer. Through the accession of a bio-found plasticiser, and this efficaciously extenuate the inbuilt crispness of the matrix, impact resistance, a decisive argument for condom, hence was continue. Analysis affirm that the composite possess passable thermic stability, with the onset degradation temperature remaining easily above the operational temperature get within vehicle cabins, reaching up to 210degrees Celsius.

Beyond mechanical and hardiness, the functioning of the composite was a focal pointedness of the probe. Accelerated weathering and controlled compost exam sustain the exceptional end-of-life biodegradability of the stuff. The complex exhibited a expiration of over 60percent within a compost cycle, thereby validate their voltage to importantly reduce wastefulness. To an density reduction of the textile, the nature of the natural character lend. This weight reduction fundamentally interpret straight to better fuel efficiency and dispirited greenhouse gas emissions during the operable lifetime of the fomite. As highly, hence eco-favorable choice that ordinate with the sustainability targets of advanced manufacturing. The determination establish these fresh composite.

6.2. Final Remarks

The passage toward eco-favorable cloth in manufacturing act a vital stride in extenuate the environmental footmark of transferral. This research has evidence that new composites can attain the and caloric performance criteria necessitate for lotion while offering a feasible end-of-spirit degradation pathway. By apply renewable matrix reinforced with natural character, the originate composite importantly concentrate the trust on oil-found plastic. See that fling part can decay under composting term than hoard in landfill, the constitutional biodegradability of these materials straightaway addresses the escalate crisis of automotive substantial waste. Equate to traditional synthetical composite. Furthermore; the processing methodologies optimise throughout this probe

involve humble energy inputs. Add to a diminution in overall greenhouse gas emissions during the manufacturing phase.

Beyond their profound environmental benefits, the practical implications of integrating these biodegradable composites into the automotive sector are highly promising. The prosperous lastingsness-to-weight proportion of the proposed materials, characterise by a subjugate mass m while observe a high modulus E . Directly indorse diligence-full initiatives. This mass reduction is substantive for ameliorate fuel efficiency in interior combustion engine vehicles and for cover the operable battery range of galvanising vehicles. As frameworks mandate stricter emission standards and eminent sustainability quotas for end-of-lifetime vehicle, the acceptance of these ripe composite provides a strategical compliance advantage for automotive producer. While sealed engineering challenges rest see long-term durability under endure term and the economical grading of production infrastructure, the information intrinsically make herein volunteer a racy design for future commercialisation. Seamlessly aligning high-performance component design with the imperative rule of a saving, ultimately, the deployment of these sustainable complex has the potency to catalyse a paradigm shift in automotive technology.

References

1. D. Fouad and M. Farag, "Design for sustainability with biodegradable composites," *Design and Manufacturing*, vol. 10, 2019.
2. E. Oh, M. M. Godoy Zúniga, T. B. Nguyen, B. H. Kim, T. Trung Tien, and J. Suhr, "Sustainable green composite materials in the next-generation mobility industry: review and prospective," 2024.
3. A. B. Nair, P. Sivasubramanian, P. Balakrishnan, K. A. N. Ajith Kumar, and M. S. Sreekala, "Environmental effects, biodegradation, and life cycle analysis of fully biodegradable 'green' composites," *Polymer Composites*, pp. 515-568, 2013.
4. J. P. Patel and P. H. Parsania, "Characterization, testing, and reinforcing materials of biodegradable composites," **Biodegradable and Biocompatible Polymer Composites: Processing, Properties and Applications**, pp. 55-79, 2017.
5. Y. G. Thyavihalli Girijappa, S. Mavinkere Rangappa, J. Parameswaranpillai, and S. Siengchin, "Natural fibers as sustainable and renewable resource for development of eco-friendly composites: a comprehensive review," *Frontiers in Materials*, vol. 6, p. 481024, 2019.
6. S. Maiti, M. R. Islam, M. A. Uddin, S. Afroj, S. J. Eichhorn, and N. Karim, "Sustainable fiber-reinforced composites: a review," *Advanced Sustainable Systems*, vol. 6, no. 11, p. 2200258, 2022.
7. A. Ashothaman, J. Sudha, and N. Senthilkumar, "A comprehensive review on biodegradable polylactic acid polymer matrix composite material reinforced with synthetic and natural fibers," *Materials Today: Proceedings*, vol. 80, pp. 2829-2839, 2023.
8. M. Y. Khalid, R. Imran, Z. U. Arif, N. Akram, H. Arshad, A. Al Rashid, and F. P. García Márquez, "Developments in chemical treatments, manufacturing techniques and potential applications of natural-fibers-based biodegradable composites," *Coatings*, vol. 11, no. 3, p. 293, 2021.
9. A. K. Mohanty, M. A. Misra, and G. I. Hinrichsen, "Biofibres, biodegradable polymers and biocomposites: An overview," *Macromolecular Materials and Engineering*, vol. 276, no. 1, pp. 1-24, 2000.
10. M. Y. Khalid, A. Al Rashid, Z. U. Arif, W. Ahmed, H. Arshad, and A. A. Zaidi, "Natural fiber reinforced composites: Sustainable materials for emerging applications," *Results in Engineering*, vol. 11, p. 100263, 2021.
11. A. N. Netravali, "Biodegradable natural fiber composites," *Biodegradable and Sustainable Fibres*, pp. 389-440, 2005.
12. J. T. Varghese, N. S. Raj, and G. Jiji, "Development of biodegradable composites and investigation of mechanical behaviour," *Materials Today: Proceedings*, vol. 38, pp. 3378-3385, 2021.

Disclaimer/Publisher's Note: The statements, opinions and data contained in all publications are solely those of the individual author(s) and contributor(s) and not of Publisher and/or the editor(s). Publisher and/or the editor(s) disclaim responsibility for any injury to people or property resulting from any ideas, methods, instructions or products referred to in the content.